

Driving to the METEC Site- Fort Collins, CO

From I25:

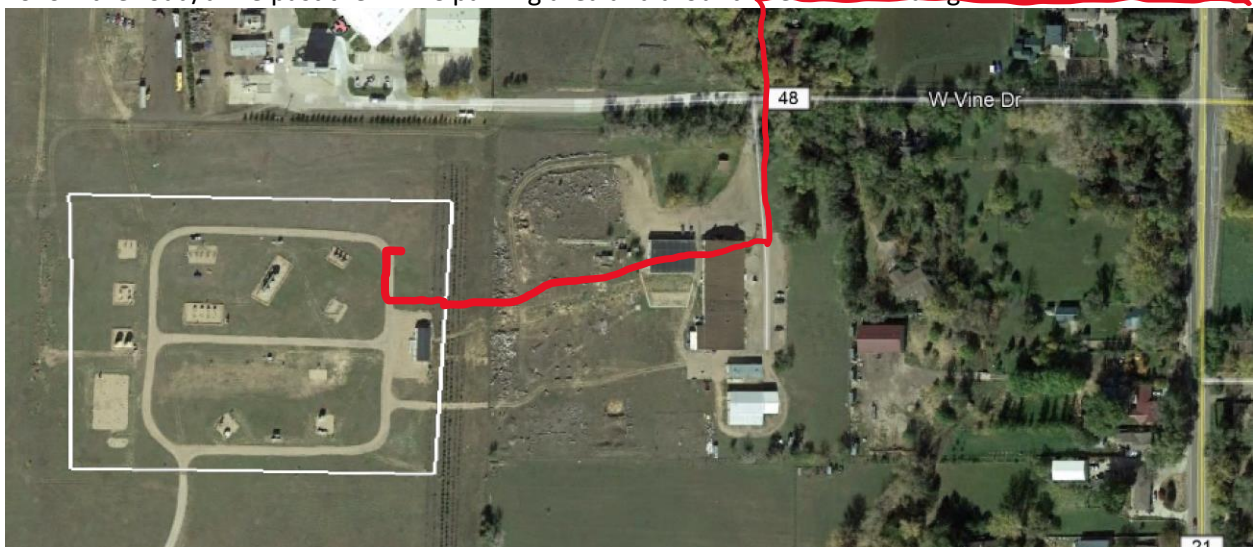
1. Travel North or South on I-25
2. Follow I-25 to CO-14 W/E Mulberry Street in Larimer County. Take Exit 2698 from I-25
3. Head West on Mulberry St. and continue for about 8 miles
4. Turn right (North) on Overland Trail
5. Continue for about 1 mile and turn left (West) on Vine Ave

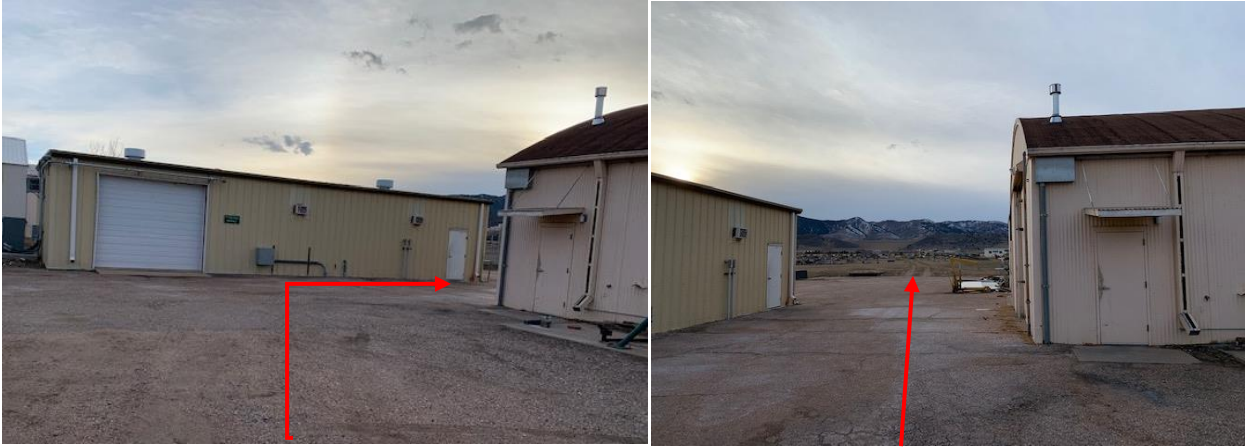
From Vine to METEC Site

6. After turning onto Vine Ave, continue West for about ¼ mile
7. The Poudre Fire Authority will be directly ahead and there is a green sign with white lettering to direct you to METEC on the left.
8. **Please maintain a safe speed of 10 mph as you approach the buildings.**



9. Follow the road/drive past the MERC parking area and around the main building





10. Turn right between the main building and a yellow garage/barn and head through the CSU Logging Team training area.



11. Pass through the gate to enter the METEC site. Park either in front of the Trailer or off to the South Side of the trailer on the grassy area.